

# GUEST INFORMATION



## **The Salvation Army** **Stanmore House** Conference and Training Centre



97 Cambridge St  
Stanmore NSW 2048



02 9557 1105



stanmorehouse.enquiries@salvationarmy.org.au



stanmorehouseconferenceandtrainingcentre



stanmorehouse.org.au

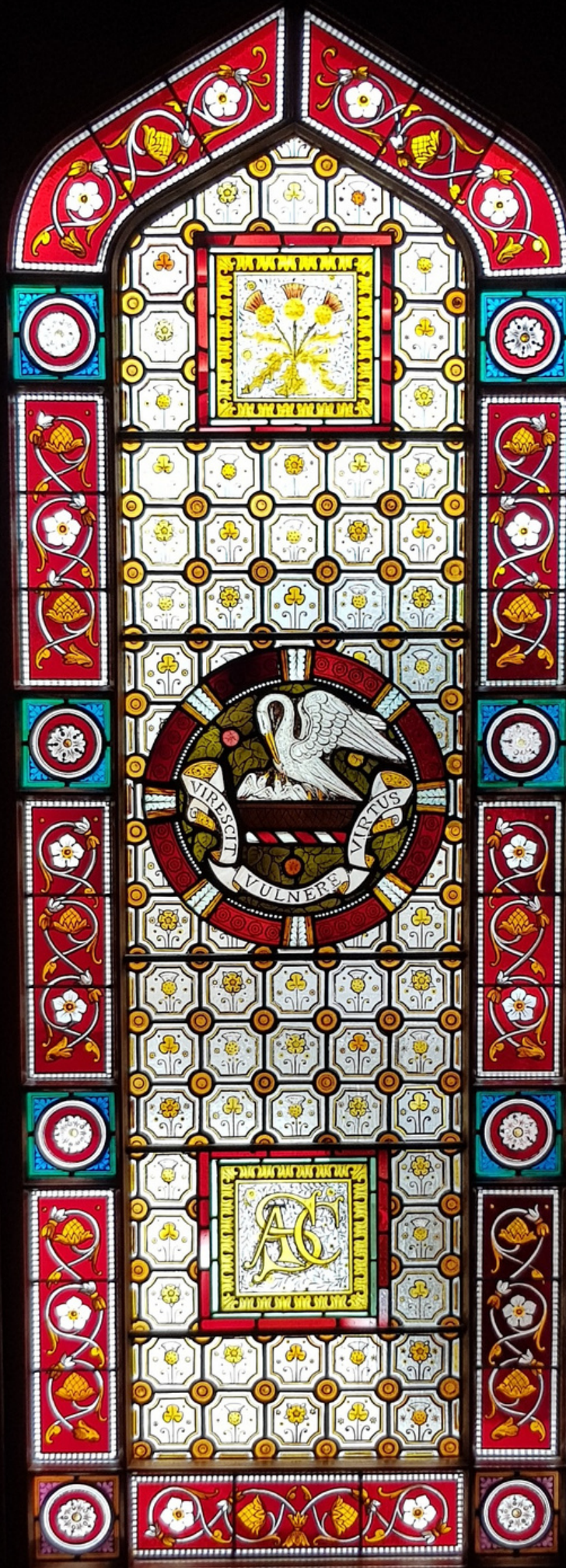




## **Acknowledgement of Country**

**We acknowledge the Traditional Owners of the country on which we meet today, the Gadigal people of the Eora nation, and recognise their continuing connection to land, waters and culture. We pay our respects to their Elders past, present and emerging.**



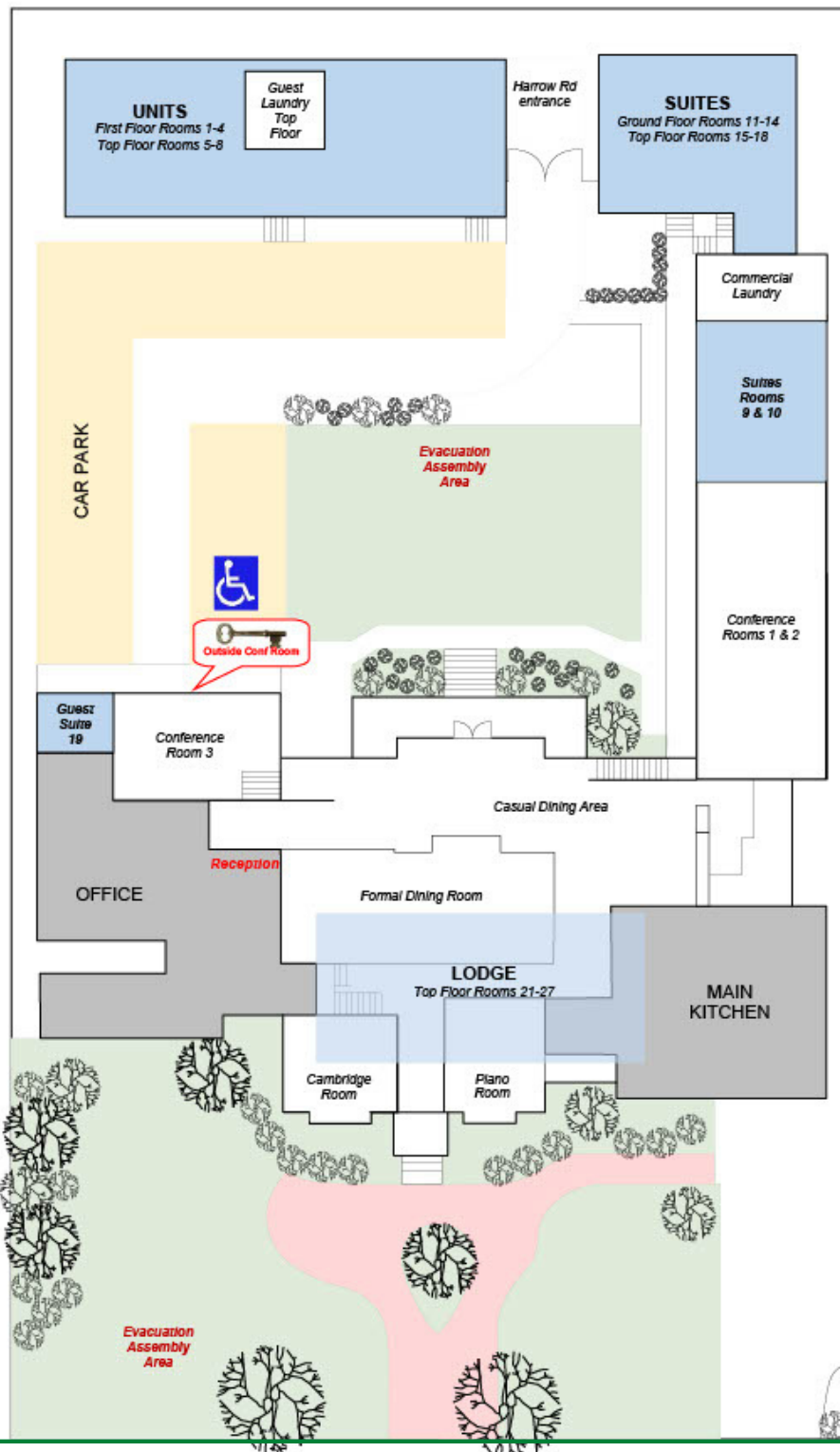


# TABLE OF *contents*

- 4 Site Map
- 5 Site Information
- 7 Departure Information
- 8 Emergency Procedures
- 9 Local Facilities
- 11 Getting Around
- 12 Local Map
- 13 Church Services
- 15 History of Stanmore House

# SITE MAP

51-53 HARROW RD



97 CAMBRIDGE ST

## SITE INFORMATION

### Reception

9557 1105  
8.00am - 4.00pm M - F  
excluding Public Holidays

### Room Servicing

Accommodation is not serviced. If you require urgent cleaning or are in need of clean linen, please contact Reception during office hours.



### Internet

Login Details are supplied at check in.



### Hair Dryers

Please contact Reception during Office Hours to borrow hair dryers.



### Security

The room key that you have been issued will access your accommodation. Keys for Lodge Rooms (Rooms 21-27) also open the main access doors into the main building.

When not in rooms, all guests are to ensure that:

- Accommodation is secured
- Lights and air conditioning are turned off
- Keys are not left in your room
- After Hours, external doors to the main building are locked

As there are no staff on site after hours, please assume responsibility for security of the site at these times.

The access gate to Harrow Rd locks automatically overnight for your safety and security. A gate code will be provided to you with your booking confirmation details. When exiting, drive up to the gate and it will open automatically.

Lost keys will incur replacement costs of at least \$30.00

**After Hours  
Emergencies  
Number provided  
with booking  
information**



## SITE INFORMATION



### Car Parking

On site parking is available on a first come first served basis. The entrance is from 51-53 Harrow Rd, Stanmore.

The access gate to Harrow Rd locks automatically overnight for your safety and security. When exiting in a vehicle, drive up to the gate and it will open automatically.

Street parking in the immediate area is not metered.

In line with The Salvation Army ethos, Stanmore House has a strict policy of **NO SMOKING, NO ALCOHOL and NO use of ILLEGAL DRUGS** on site, including within the carpark



NO DRINKING



NO SMOKING



### Guest Laundry

Laundry Facilities for guests are located in the Unit Block, up the first set of stairs in the internal stairwell.

Use of laundry facilities is \$5.00 per load of washing, which includes the use of washing powder, the washing machine and dryer. Please place payment in the Cash Tin located in the laundry.

#### Irons and Ironing Boards

Rooms 1 - 19 Units and Suite Rooms  
Located inside the wardrobe.

Rooms 21 - 27 Lodge Rooms

An ironing board and iron are located in the Lodge Kitchen. The iron is located in the first cupboard in the kitchen, with the ironing board behind the door.



### Damages

Any breakages, defects or damages to rooms are to be reported to the office. A maintenance form is available at the back of this folder. Deliberate damage, or that resulting from irresponsible behaviour will incur fees for damages and be treated as vandalism.



### Lost Property

While every effort will be made to return lost property to you, if not claimed within one month, any personal items left behind will be forwarded to a Salvos Store.

Please contact the office if you believe you have left an item at Stanmore House. Please provide an express post envelope to return your item to you.

## DEPARTURE INFORMATION

When checking out, please ensure:

- You have removed all personal effects from your room
- You return keys to reception no later than 10.00am
- You do not leave your keys in your room
- Air conditioning and lights are switched off
- Doors and windows in your room are left closed and/or locked
- Kitchens/kitchenettes are left clean and tidy with all utensils and equipment washed, dried and put away

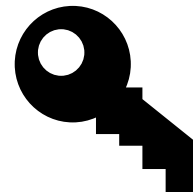
If departing on weekends, public holidays or before reception is open, please return your key to the box located in the Key Cupboard (see map on Page 4).

If staying in Lodge Rooms (Rooms 21-27), you can return your key to the gold box in the Lodge Kitchen.

If not departing the site immediately, luggage can be left at reception during office hours until 4.00pm. Please DO NOT leave bags unattended in common areas.

Rooms are expected to be kept in a clean and tidy state. If additional cleaning is required due to a failure to leave the premises in a clean state, additional cleaning fees of \$150.00 will be charged.

**Check out time  
10.00am**



**Please return keys  
to reception**



## Rubbish

Excess rubbish can be put into the bins outside the ensuite and unit blocks.

Bins with a yellow lid are for recycling of paper, cardboard, bottles, cans.

Bins with a red lid are for general rubbish.

Green lid bins are for food and garden waste only.

# EMERGENCY PROCEDURES

## Evacuation Procedures



Please familiarise yourself with the Emergency Evacuation diagram which is found on the back of your door. A copy of this is found in the Appendix Section. This shows you the location of the closest Fire Equipment to assist you in an emergency, and your most direct emergency exit.

If the building's Emergency Alarm is activated, the Fire Brigade have been notified and are on their way. Please proceed to your nearest Emergency Evacuation area, and follow the directions of staff and the Fire Brigade. You will be told when it is safe to go back to your rooms.

There are two Emergency Evacuation Areas on site, both of which are signposted. The first is on the back lawn accessible from Harrow Rd near the covered BBQ area.

The second is on the front lawn close to the front fence on Cambridge St.

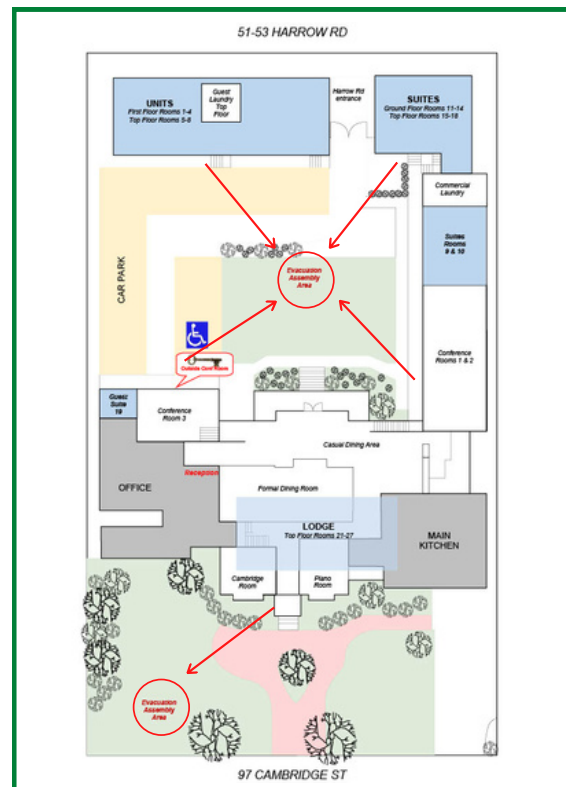
Please note: the Unit Block (Rooms 1 - 8) have stand-alone smoke detectors. If these are activated, the Fire Brigade **ARE NOT** notified. Should there be a fire, please call the Fire Brigade by dialling 000, or 112 from a mobile phone.



## First Aid

If you require First Aid during Office Hours, please come to reception where we have a fully stocked First Aid kit and staff with First Aid qualifications to assist you.

Outside of Office Hours, a smaller kit with basic supplies is located in the Guest Laundry, and for our guests staying in the Lodge (Rooms 21 - 27), there is a First Aid kit in the Lodge Kitchen located at the end of the hall past the bathroom facilities.





## LOCAL FACILITIES

### Medical



### Information

Royal Prince Alfred Hospital  
Missenden Rd, Camperdown  
Tel 9515 6111

Enmore 7 Day Pharmacy  
211 Enmore Rd, Enmore  
Tel 9516 3355  
8.00am - 9.30pm 7 days

First Care Medical Centre  
214 Enmore Rd, Enmore (opp Chemist)  
Tel 9519 4888  
8.00am - 6.00pm Monday - Friday  
9.00am - 4.00pm weekends

Stanmore Station Pharmacy  
104A Cambridge St, Stanmore  
Tel 9569 4396  
Check online for current opening hours  
Closed Sundays



### Banks

Nearest Branches  
Westpac  
70 Norton St, Leichhardt  
(2.1km)

Commonwealth Bank  
294 King St, Newtown  
(1.1km)

St George Bank  
34 Victoria Rd, Marrickville  
(1.4km)



### Post

Australia Post  
184 Enmore Road, Enmore

Post boxes are also located at the end of Cambridge St near the train station and on Enmore Rd near the post office.

## LOCAL FACILITIES



### Shopping

Post Office, Hairdresser, cafes  
Enmore Rd

#### IGA Supermarket

Holt Street, Stanmore. Follow Cambridge Street towards the train station, turn left onto Holt St

#### Seven Eleven Store/Service Station

Stanmore Rd  
From either Harrow Rd or Cambridge St, turn right onto Liberty St. Store is on Stanmore Rd, across from the lights at the end of Liberty St.

#### Marrickville Metro Shopping Centre

Victoria Rd, Marrickville  
Woolworths, Coles, KMart, Aldi and a variety of shops.



### Food

There are no restaurant facilities located on site. Your accommodation has access to the following kitchen facilities:

- Rooms 1 - 8 Units have their own kitchen
- Rooms 11 - 18 Ensuite rooms have access to a kitchenette downstairs in the ensuite block
- Rooms 9, 10 and 19 Suite Rooms have their own microwaves and bar fridges
- Rooms 21 - 27 Lodge Rooms have a kitchen located at the end of the hall past the bathrooms

Stanmore House is within walking distance of many cafes and restaurants in both Stanmore and Enmore.

Menu Log or UBEReats will deliver to Stanmore House. When ordering, it is advised to organise to meet your delivery near the garages at the front of 53 Harrow Rd, as delivery drivers will not be able to access the site after hours. Please note our postcode is 2048.

## GETTING AROUND



### Trains

Stanmore Railway Station is a 5 minute walk from Stanmore House.  
From Cambridge St, turn right and walk to the end of the street.  
On weekdays, trains to the city run approximately every 15 minutes.



### Taxis

Sydney Taxis 131 008

When ordering a taxi or UBER, we recommend using 53 Harrow Rd as a pick up and drop off address.



### Buses

Buses #423, #426 and #428 depart from Enmore Rd to the city.



To travel on all forms of Public Transport in Sydney, you can either use an Opal Card, or a credit card, debit card or linked device. Tap on when you board, and tap off using the same card when you reach your destination.

Opal cards are available to purchase at Newsagents and Convenience stores. They can be topped up at train stations.

To plan your trip, visit <https://transportnsw.info/>



### Planes

Stanmore House is less than 5 kilometres from the airport, and is directly under the flight path of many incoming international flights. Noise from planes is a normal part of life. Sydney airport has an overnight curfew on the majority of flights between 11.00pm and 6.00am daily.

For more information on airport curfews, visit <https://www.infrastructure.gov.au/aviation/environmental/curfews/SydneyAirport/SydneyCurfewBrief.aspx>



## BRIEF HISTORY OF STANMORE HOUSE



The property that Stanmore House is located on has been owned by The Salvation Army since 1900. The original house, now heritage listed, was built circa 1872 by William Henry Paling, founder of Paling's Music store which operated in Sydney until the late 1980's. The property purchased by Paling included a significantly larger parcel of land than that which is now owned by The Salvation Army.

The property was then purchased by Alexander Stuart in 1873. Stuart was the premier of New South Wales from 1882 to 1885. From 1877 until 1900, the property's ownership passed through several parties, and had numerous name changes, along with subdivisions of the parcel of land.

Under ownership of The Salvation Army, the property has had a rich history of functions since 1900:

- Rescue Home for women and girls, with the operation of an industrial laundry and sewing service
- From 1932, girls on probation were also accommodated
- From 1948 to the early 1960s it operated as a young people's hostel
- 1969 - 1987 The main house was also used as a Children's home
- In 1988 the Centre for Officers' Further Training was established at Stanmore

The purpose of COFT was to better equip officers and Salvationists to proclaim the gospel of Jesus Christ.

In 1993 COFT was renamed Salvation Army Leadership Training (SALT). There was a further name change to the School for Leadership Training (SFLT), before a relaunch as a Conference Centre in 2015 with the present name of Stanmore House.





How did we do?

